



Ridgeways Road, 11646; P.O. Box 25734 – 00100 Telephone: + 254 778 170 650 +254 733 899 909.

## **KARIBU KENYA GROUP DEPARTURE** **2024**

**DEPARTS EVERY TUE WITH MINIMUM 02 PAX**

### **DAY 1: MONDAY: NAIROBI - AMBOSELI NATIONAL PARK)**

Pick up Nairobi/Hotel in the morning and drive towards Amboseli National Park, arriving on time for lunch, later in the afternoon on game drives. Amboseli national park is one of the most popular parks on the Tanzania border offering unique spectacle; the backdrop is the snow-capped Mt. Kilimanjaro, Africa's highest mountain proudly standing at 19,344ft, and sometimes known as the "ROOF OF AFRICA". Later in the evening return for dinner and overnight at **Amboseli Serena - Full Board** - <https://www.serenahotels.com/amboseli>

**Amboseli national park** - <http://www.kws.go.ke/amboseli-national-park>



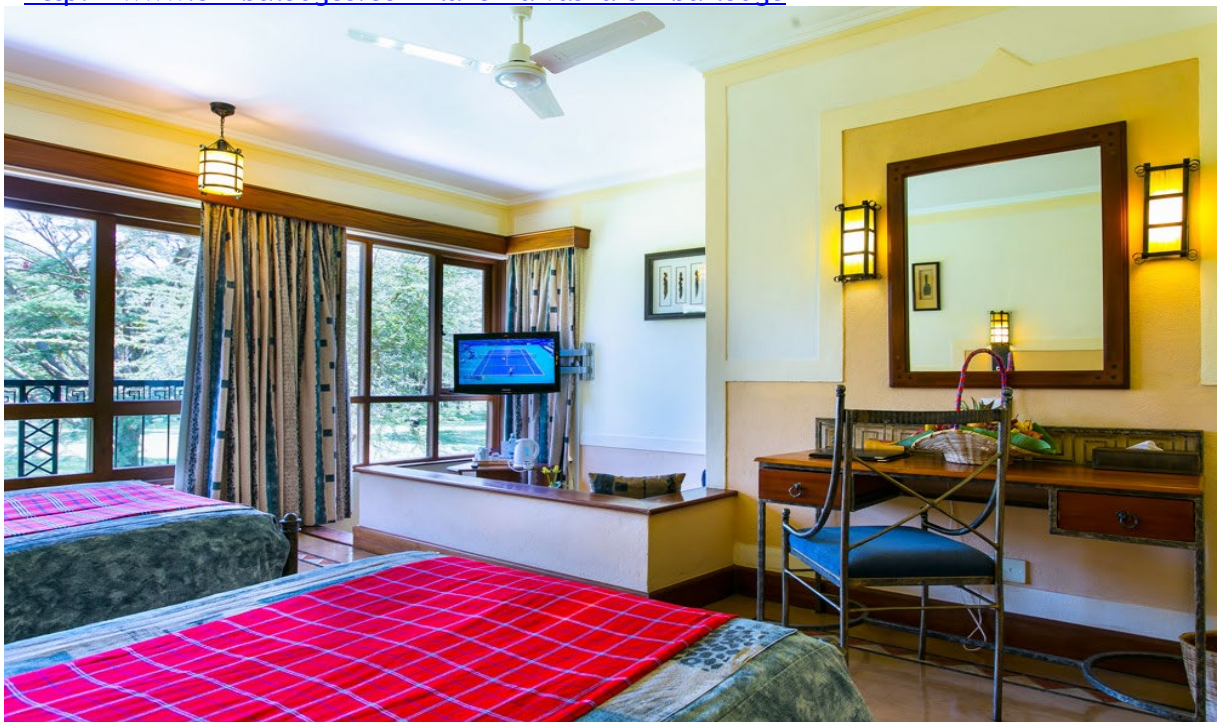
### **DAY 2: TUESDAY: AMBOSELI NATIONAL PARK**

Enjoy early morning game drives, watch the sunrise experience overlooking Mt Kilimanjaro, return to the lodge for breakfast, morning on game drives return to the lodge for hot lunch, afternoon on game drives or optional relax by the pool. Dinner and overnight at **Amboseli Serena - Full Board** -



**DAY 3: WEDNESDAY: LAKE NAIVASHA**

After breakfast, check out and drive towards Lake Naivasha, arriving on time for lunch, lunch is served then prepare for the afternoon boat ride normally 03 hours ride with visit to Crescent Island, afterwards return for dinner and overnight at **Naivasha Simba - Full Board** - <http://www.simbalodges.com/lake-naivasha-simba-lodge>



**DAY 4: THURSDAY: LAKE NAIVASHA - MAASAI MARA GAME RESERVE**

After breakfast, check out and drive towards Mara arriving on time for lunch, later in the afternoon enjoy game viewing. Later in the evening return to the Lodge/ Camp for dinner and overnight at **Mara Simba Lodge - Full Board** - <http://www.simbalodges.com/mara-simba-lodge>  
**Maasai Mara Game Reserve** - <https://www.maasaimarakenyapark.com/>



**DAY 5: FRIDAY: MAASAI MARA GAME RESERVE**

After breakfast, check out with picnic lunch box for a busy day in search for the wild animals. Every year the Mara plays host to the world's greatest natural spectacle, The Great Wildebeest Migration from the Serengeti. The big cats - lion, leopard, and cheetah. Dinner and overnight at **Mara Simba Lodge - Full Board**

**DAY 6: SATURDAY: DEPART - NAIROBI**

After breakfast, check out and drive towards Nairobi and transfer towards J.K.I.A for your scheduled international flight.

**\*\*\* End of Explorer Kenya Services \*\*\***



**NET TOUR OPERATOR RATE QUOTED WITH US DOLLAR**

No. of persons/ Season PP in US\$	Per person sharing double /Twin	Single room supplement	Single Traveler
01 <sup>st</sup> Jan - 30 <sup>th</sup> Mar 2024	1780	395	2790
01 <sup>st</sup> April - 15 <sup>th</sup> June 2024	1575	75	2245
16 <sup>th</sup> June - 30 <sup>th</sup> June 2024	1650	96	2390
01 <sup>st</sup> July - 15 <sup>th</sup> July 2024	2305	515	3570
16 <sup>th</sup> July - 31 <sup>st</sup> Aug 2024	2470	640	3860
01 <sup>st</sup> Sept - 30 <sup>th</sup> Sept 2024	2305	515	3570
01 <sup>st</sup> Oct - 31 <sup>st</sup> Oct 2024	1997	399	2992
01 <sup>st</sup> Nov- 15 <sup>th</sup> Dec 2024	1982	350	2976

**Package includes.**

- ✓ All park entrance fees.
- ✓ Accommodation and meals as per the itinerary.
- ✓ Drinking water station in your vehicle ***please bring reusable water bottle to be refilled as needed.***
- ✓ Services of English-speaking experienced driver/guide
- ✓ Transport in a 4x4 safari land cruiser with pop up roof for game viewing and photography.
- ✓ Exclusive use of safari vehicle throughout the trip
- ✓ All government taxes and levies
- ✓ Boat ride and visit to crescent Island

- ✓ Safari accessories (First Aid kit, cooler box, and fire extinguisher) Emergency number 24 hours.
- ✓ All safari vehicles have RF radio to help driver locate wildlife.

**Package excludes:**

- × Expenses of personal nature such as visas, driver tips etc.
- × Easter and Christmas supplement
- × Balloon safari
- × Maasai village visit
- × Personal insurance cover
- × Alcoholic and non-alcoholic drinks
- × Domestic and international flights and respective taxes